

ROYAL MARKER

SPECIMEN MARKING DYES



DESCRIPTION

Royal Marker Specimen Marking Dyes are high quality marking dyes used in pathology laboratories, histology laboratories, gross rooms, and MOHS laboratories to highlight microscope areas of interest (margins) and to orient excised tissue samples. Our dyes specific formula is such that it will be visible after performing frozen section and tissue processing. They will not run or bleed. The color intensity is of highest quality and there is no fading or color change.

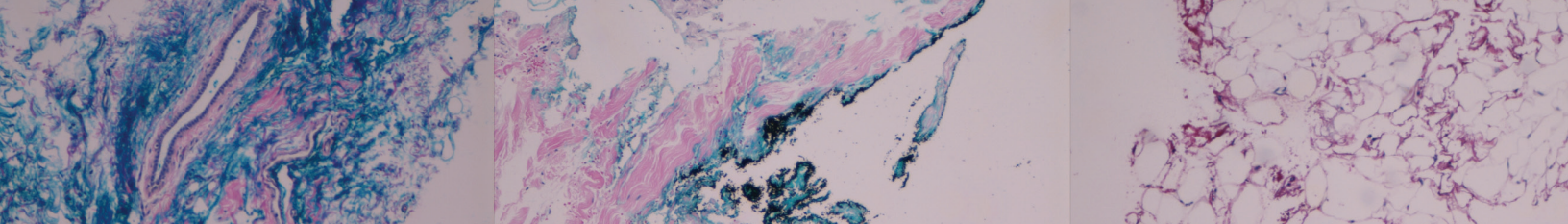
APPLICATION / INTENDED USE

Our dyes are widely used in a variety of laboratory applications including tissue margin identification, Her-2/neu by FISH studies, core biopsy color rotation, and general inking. They are made to withstand the rigors of tissue processing without bleeding, changing colors, or fading while being used to identify and orient excised tissue samples. They may be used on fresh or fixed tissue.

MODE OF ACTION

Tissue marking dyes have cationic (positively) charged properties. They are attracted to the negatively charged, anionic tissue components forming a strong ionic bond. Once attached, these bonds are resistant to the exposure of tissue processing chemicals and other factors.

Some tissue components are amphoteric (neutrally charged) and will simply take up the dye by adsorption.



PROCEDURE

Tissue Marking Dyes are ready to use.
Shake the bottle well before use.

1. Fresh tissue should be patted dry.
2. Fixed tissues should be blotted to remove residual fixative solutions.
3. Apply dye color choice directly to the chosen portion of the tissue. Avoid applying the marking dye in excess to prevent increase in drying time and to prevent bleeding of the dye into other areas of the tissue.
4. Dyes will bind permanently to the surface of the specimen in approximately 2-3 minutes at room temperature.
5. After use, close the lid and store at room temperature.

NOTE No mordant is necessary, however, the use of acetone or acetic acid may enhance adherence of the dyes.**

STORAGE AND SAFETY

Store tissue marking dyes at room temperature (15C - 30C)/(59F - 86F)
Refer to SDS for details: www.royalmarker.com

These tissue marking dyes are only to be used for tissue that has been removed from a patient.

PRODUCT INFORMATION

<u>COLOR</u>	<u>ITEM# 2oz.</u>	<u>ITEM# 8oz.</u>
Black	BL2	BL8
Royal Blue	RB2	RB8
Green	GR2	GR8
Violet	VL2	VL8
Magenta	MG2	MG8
Red	RD2	RD8
Yellow	YW2	YW8
Orange	OR2	OR8
Teal	TL2	TL8
Gold	GL2	GL8
Kit with all 10 colors	DYP2	DYP8



PO Box 21125, Fort Lauderdale, FL 33335-1125, U.S.A.
(P) 954-462-0264 (F) 954-374-7290
sales@royalmarker.com - www.royalmarker.com